



ASHRAE

American Society of Heating, Refrigerating and Air-Conditioning Engineers, Inc.

La Crosse Area Chapter

2003-2004 Officers:

President

Susanna Hanson
Trane, 12-2
3600 Pammel Creek Road
La Crosse, WI 54601
PH (608) 787-4886
FAX (608) 781-2204

President-Elect

Ed Swan
Rockwell Automation
1288 Rudy St.
Onalaska, WI 54650
PH (608) 781-7180
FAX (608) 781-7182

Treasurer

Dwayne Johnson
Trane, 12-1
3600 Pammel Creek Road
La Crosse, WI 54601
PH (608) 787-3385
FAX (608) 787-2669

Secretary

Bill Fox
Trane, 12-1
3600 Pammel Creek Road
La Crosse, WI 54601
PH (608) 787-2460
FAX (608) 787-2669

Board of Governors

Ken Bagniefski
B & B Sheet Metal
2815 So 26th St
La Crosse, WI 54601
PH (608) 788-7236
FAX (608) 788-7236

Mike Clatworthy

Multistack
365 South Oak Street
West Salem, WI 54669
PH (608) 786-3400
FAX (608) 786-3450

Ken Scanlon

Trane, 17-1
3600 Pammel Creek Road
La Crosse, WI 54601
PH (608) 787-2733
FAX (608) 787-3005

March 19, 2004

William A. Murray P.E. Ret.
Fellow ASHRAE
Region VI Historian

Dear Mr. Murray,

I am enclosing the La Crosse Area Chapter's 22nd entry for the Gold Ribbon Award. The La Crosse Area Chapter, 115, is pleased to submit the history of a person and the updated history of the chapter. The person is Milton L. Hoglund, a past manager of the Refrigeration Application Engineering group at Trane. He contributed much time to the perpetuation of the La Crosse Area Chapter.

Thank you.

James M. Ritter, P.E.
Chapter Historian
La Crosse Area Chapter

CHAPTER MAY NOT ACT FOR SOCIETY

History of a Person

Milton L. Hoglund, P.E.

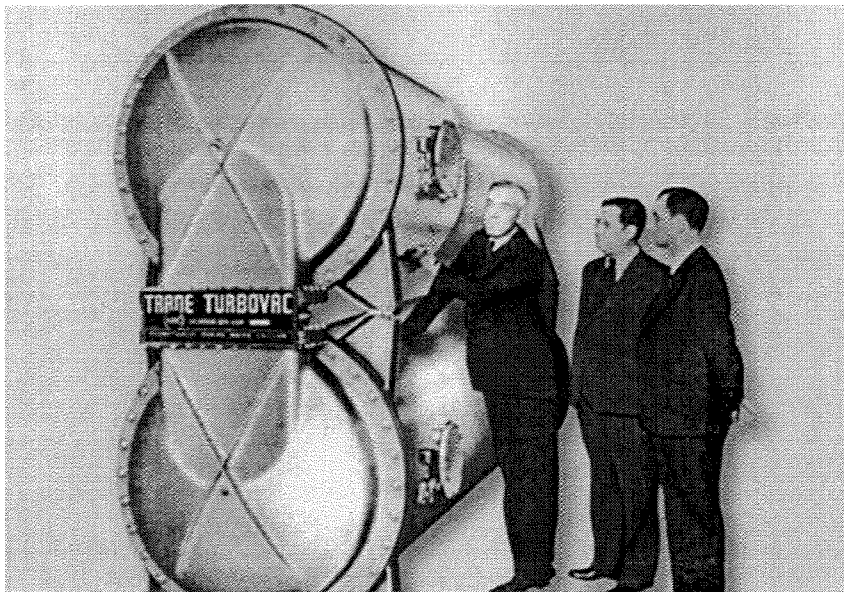
Milton was born on January 18, 1909 in Minneapolis, Minn. He graduated from Minneapolis Central High School in 1927 and from the University of Minnesota in 1931. Following graduation, Milton began a long and distinguished 40-year career with The Trane Company, La Crosse, Wisc., 1931-1971 and later as a consultant.

Professional History

- July 1931 to February 1971 – Employed by The Trane Company, La Crosse, Wisconsin
- July 1931 to July 1932 – Student Engineer
- July 1932 to January 1934 – Engineering Draftsman on Heating and Air Conditioning Systems
- January 1934 to January 1935 – Supervisor of Draftsmen doing air conditioning system design work. This involved complete responsibility for load calculations, system layouts and specifications.
- January 1935 to June 1938 – Application Engineer on air conditioning products manufactured by The Trane Company. During this period he was active in the design of special guestroom air conditioners that were installed in the Palmer House, Chicago, under Charles S. Leopold, Consulting Engineer of Philadelphia, for example.
- June 1938 – April 1942 – Project Engineer on new line of centrifugal refrigeration units, the TurboVac™, being developed and introduced by The Trane Company. He was responsible only to Chief Engineer in developing, manufacturing, and testing first units. Supervised installation of early units, trained Field Service Engineers, prepared engineering and application literature and worked with consulting engineers in application engineering of equipment. During this period installations were made on the following typical projects with which he was closely allied:
 - a. W.F. Hall Printing Company
Chicago, Illinois
120 tons refrigeration for cooling multi-color press rolls
 - b. S. H. Kress Store
New Orleans, Louisiana
210 tons refrigeration for comfort air conditioning
 - c. Inland Steel Company
Indiana Harbor, Indiana
180 tons refrigeration in "Dry Blast System" for conditioning blast furnace air supply



Milt Hoglund (facing camera) at the opening of the Trane Research and Development facility in La Crosse, 1954



Reuben Trane introducing the Turbovac. The world's first hermetic, centrifugal refrigeration machine, circa 1938

- April 1942 to January 1960 – Manager, Refrigeration Sales Department. Responsible to top management for all phases of refrigeration products manufactured and sold by The Trane Company. This included application engineering, service engineering, product design and production. Sales and engineering literature is prepared and produced under his supervision.
- January 1960 to February 1971 – Manager, Refrigeration Application Engineering. Responsible for revisions in Trane Refrigeration Manual, and refrigeration chapters in Trane Air Conditioning Manual. Revised Trane Air Conditioning Clinic. Designed system for air conditioning the Western Deep Levels Mine in Carletonville, South Africa. Initiated design concepts of special water chillers for that project. Supervised preparation of bids on the mine project and supervised the production of equipment. Installation and operating instructions for centrifugal water chiller for this mine project and others in the same area. This involved approximately 5000 tons of chilled water equipment.

Milton wrote many technical articles:

1. Scale and Corrosion Prevention in A.C. Systems, Actual Specifying Engineer, March 1968.
2. Guidelines for Central Plant Cooling Power, June 1969.
3. Central Air Conditioning – A Basic Tool in Building High Quality Schools at Reasonable Costs, Trane Engineering Bulletin
4. Air Conditioning for Existing Schools, Trane Engineering Bulletin
5. Hot Gas Bypass, Trane Engineering Bulletin
6. Water Treatment in Air Conditioning Systems, Trane Engineering Bulletin

He was a regular speaker at the annual Trane Engineering Seminars, discussing such subjects as:

1. The Economy Four-Pipe System
2. Central Chilled Water Plants
3. The Economics of Central Plants for Apartment Air Conditioning
4. How to Justify Central Systems for Commercial Building Air Conditioning
5. How VariTrane Systems Can Be Coordinated With Commercially Available Ceiling Systems

- July 1966 – July 1970 - Member of ASHRAE Technical Committee TC5.5 Centrifugal Machines
- February 1971 onward – Consultant for The Trane Company on Refrigeration Consultant and Special Projects. Handled the Air Conditioning System Revision for Salt Lake City manufacturing plant offices. Also consulted Hackner, Schroeder, Rolansky and Associates on special air conditioning system applications and central chilled water plants.

Volunteering and Leadership

Milton was appointed to the Steering Committee in 1970 to assist in forming the La Crosse Area Chapter of ASHRAE. He was the chairman of the membership committee from 1971 to 1973. He joined ASRE in 1948 and NSPE in 1949. Milton served on the La Crosse Board of Education from 1960 to 1970, and as its President from 1966 to 1969. He served on the board of the Trane Employees Credit Union from 1935 to 1971. Milton was part of the La Crosse Rotary Club from 1955 to 1971 and he organized the local chapter of AARP in 1971.

Respectfully submitted,

A handwritten signature in cursive script that reads "James M. Ritter".

James M. Ritter P.E.
Chapter Historian