



ASHRAE

American Society of Heating, Refrigerating and Air-Conditioning Engineers, Inc.

La Crosse Area Chapter

2008-2009 Officers:

President

Rick Heiden
Trane
3600 Pammel Creek Road
La Crosse, WI 54601
PH (608) 787-3793

President-Elect

Larry Butz
GEA Consulting
2420 N. Pine Creek Road
LaCrescent MN 55947
PH (507) 895-4001

Treasurer

Michael Groen
Trane
3600 Pammel Creek Road
La Crosse, WI 54601
PH (608) 787-3190

Secretary

Jim Spielbauer
Trane
3600 Pammel Creek Road
La Crosse, WI 54601
PH (608) 787-3158

Board of Governors

Donna Bossman
Trane
3600 Pammel Creek Road
La Crosse, WI 54601
PH (608) 787-2692

Anthony Dix
Trane
3600 Pammel Creek Road
La Crosse, WI 54601
PH (608) 787-4625

Chris Schlegel
Trane
3600 Pammel Creek Road
La Crosse, WI 54601
PH (608) 787-2040

April 30, 2009

Jeff Boldt
ASHRAE Region VI Historian

Dear Mr. Boldt,

I am enclosing the La Crosse Area Chapter's 27th entry for the Gold Ribbon and Lou Flagg award. The La Crosse Area Chapter, 115, is pleased to submit the history of a person. That person is Carl F. Speich, past development engineer with the Trane Company of La Crosse, WI.

James M. Ritter, P.E.
Chapter Historian
La Crosse Area Chapter

CHAPTER MAY NOT ACT FOR SOCIETY

HISTORY OF A PERSON CARL F. SPEICH

Carl F. Speich has prepared the following biography for inclusion in the history of a person category for American Society of Heating, Refrigerating, and Air-Conditioning Engineers, Inc.

BIOGRAPHY OF CARL F. SPEICH

EDUCATION:

Secondary School – Hudson High, Hudson, NY – 1946-1950
College – BME - Rensselaer Polytechnic Institute – 1950-1954
Graduate School – MSME - Purdue University – 1954-1956



EMPLOYMENT

Summer Test Engineer – General Electric – summers of 1953 and 1954

Teaching Assistant - Purdue University – 1954-1956

Battelle Memorial Institute – 1956-1963

My first project was a joint research project sponsored by ASHVE, AGA and the Oil Burner Association to study pulsations in residential gas and oil fired heating equipment. I joined ASHVE in 1956 and voted for the merger that became ASHRAE. Subsequently, I worked on a number of projects involving such things as mass fires and noise reduction of pneumatic hand tools.

Trane Company – 1963-1997

I joined Trane as a development engineer in the reciprocating compressor group. I developed techniques for measuring the motion of valves with refrigerant flow as well as measuring valve stress during actual compressor operation. A technique for measuring cylinder pressures under operating conditions was also developed from which indicator diagrams could be estimated to improve compressor performance. I also worked on shaft seals for open compressors.

In 1972, I was promoted to Senior Engineer and continued to work on various compressor projects. I also got involved with reducing noise from roof top air conditioning units.

In 1979, I was promoted to Staff Engineer and continued to work on various compressor and noise reduction projects. I became the supervisor for a finite element analysis group and performed structural analyses of a/c units in

development. I also got involved in failure analysis of hermetic motors and developed test stands to determine the reliability of hermetic motors.

ASHRAE COMMITTEES

Handbook Committee – 8 years

Meetings and Arrangements Committee - 4 years

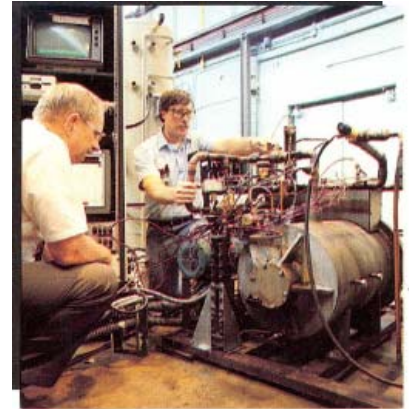
Program Committee – 4 years

Research Advisory Committee – 4 years

TC 8.1 Positive Displacement Compressors

TC 3.4 Lubrication

TC 5.1 Fans



MOTOR PLUG-REVERSAL TESTER
Thousands of cycles can quickly evaluate insulation materials and winding methods

ASHRAE HONORS

Willis H. Carrier Award for co-authoring and presenting a technical paper - 1961

Distinguished Service Award – 1985

Fellow - 1993

Carl continues to attend monthly chapter meetings when possible and is available for society consultation.

Respectfully Submitted,

James M. Ritter, P.E.
Chapter Historian